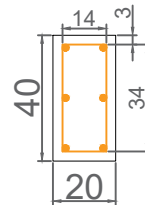
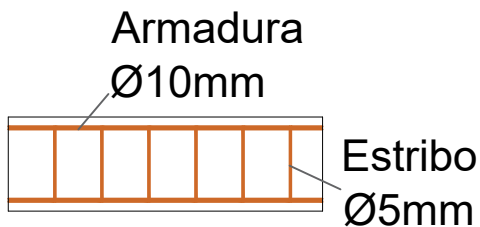


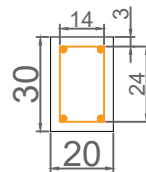
PILAR 20x40cm



Corte Pilar



VIGA 20x30cm



Corte Viga

PROJETO MURO DE CONTENÇÃO		ÁREA TOTAL: 75,91m²	PRANCHA 03 4	
			CONTEÚDO: Detalhamentos Armaduras	
Rio Grande do Sul, Brasil				